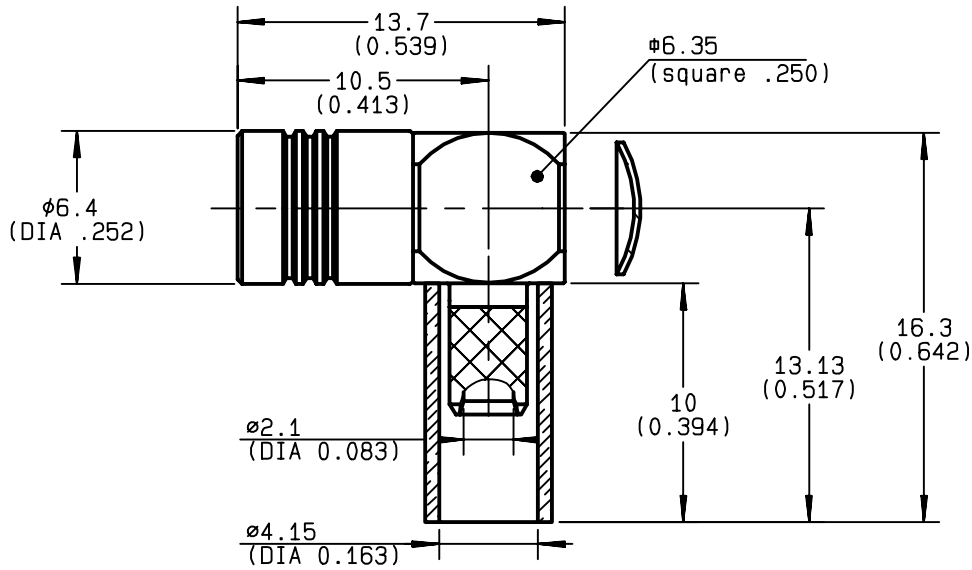


**RIGHT ANGLE PLUG CRIMP TYPE
CABLE 3.1/75 S**

R114.191.240
SERIES SMB



NOMINAL IMPEDANCE	50 Ω
FREQUENCY RANGE	0-4 GHz
TEMPERATURE RATING	-65/+165 °C
V.S.W.R	2 + x F(GHz)Maxi
RF INSERTION LOSS	0.5 √F(GHz) dB Maxi
VOLTAGE RATING	500 Veff Maxi
DIELECTRIC WITHSTANDING VOLTAGE	1000 Veff Mini
INSULATION RESISTANCE	1000 MΩMini
HERMETIC SEAL	NA Atm.cm ³ /s
LEAKAGE (pressurized only)	NA
MECHANICAL DURABILITY	500 Cycles
WEIGHT	3.52 gr
SPECIFICATION	

CABLES : ST 212	
TBR/CAB-SP.01	
TCE2HH2	
OTHERS CHARACTERISTICS	
CABLE RETENTION	110 N Mini
CENTER CONTACT RETENTION	
Axial force - mating end	10 N Mini
Axial force - opposite end	10 N Mini
Torque	NA cm.N Mini
RECOMMENDED TORQUES	
Mating	NA cm.N
Panel nut	NA cm.N
Clamp nut	NA cm.N

CONNECTOR PARTS	MATERIALS	FINISH	(all values are given) in micrometers
BODY	BRASS	GOLD 0.2 OVER NICKEL 2	
OUTER CONTACT	BERYLLIUM COPPER	GOLD 0.5 OVER NICKEL 2	
CENTER CONTACT	BERYLLIUM COPPER	GOLD 1.3 OVER NICKEL 2	
INSULATOR	PTFE	-	
GASKET		-	
OTHERS PIECES	BRASS	GOLD 0.2 OVER NICKEL 2	

ISSUE	CREATION DATE	FILE PART-NUMBER
9850A00	02/12/1997	97-0105-184



ANNEQUIN

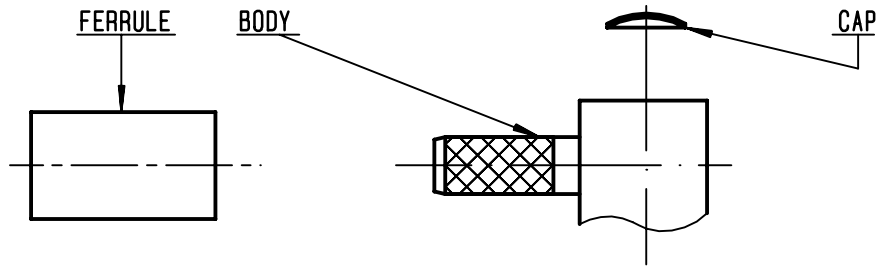
The information given here is subject to change without notice.
Design changes may be in order to improve the product .

Connect to the future



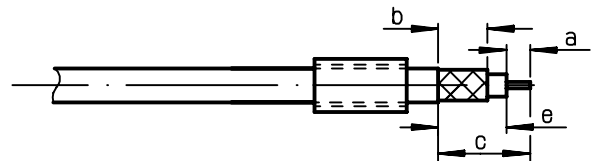
R114.191.240

ISSUE **9850A00** SERIES **SMB**



①

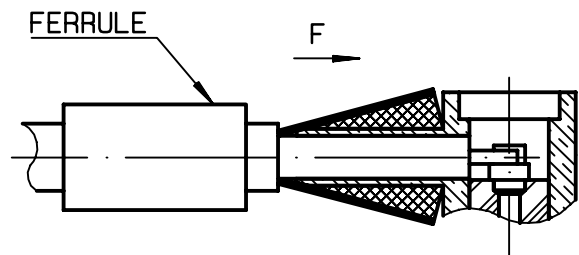
Slide ferrule onto cable .
Strip the cable .
Remove the foil between the braid and the dielectric.
Fan the braid.



Stripping	a	b	c	d	e
inch	0.059	0.213	0.378	0	0.319
mm	1.5	5.4	9.6		8.1

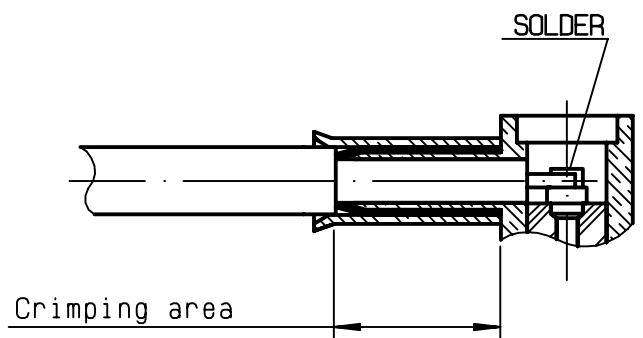
②

Fan the braid .
Push connector body under the braid .
Slide ferrule over braid
(in direction F)
-
-



③

Crimp the ferrule with crimping tool R282 211 000 (Hex. : 0.178) or crimping tool R 282 293 000 (M22520/5-01) + dies R 282 235 009 (M22520/5-09) Solder inner conductor .



④

Place the cap into body.
Press cap flush or slightly below surface of body assembly .
-
-
-
-
-

